

## Canada Summer Games at Birds Hill Provincial Park - Week 1 Closure Schedule

This information is intended to help you navigate around the park during the Canada Summer Games. Closure times are approximate and subject to change. Even on non-race days, there may be increased activity along the roads, trails and swim area as athletes train for their events. Respect the safety of our young athletes and volunteers and drive with caution while in the park and follow the detour and closure directions.

Most importantly, come and cheer on your favourite team!

<b>July 26, 2017- July 28, 2017</b>	
<b>East Beach parking lot #1</b>	<b>Closed July 26 to August 12</b>



<b>Saturday, July 29, 2017 – Triathlon Training Day</b>	
<b>East Beach parking lot #1</b>	<b>Closed July 26 to August 12</b>
<b>East Beach parking lot #2</b>	<b>North west corner will be blocked until 2p.m.</b>
<b>Lakeview Trail (East section between campground)</b>	<b>11 a.m. to 2 p.m.</b> Runners will be training on route
<b>Lake</b>	<b>11:30 a.m. to 1 p.m.</b> Swimmers will be training on the course in the deeper water. Patrons asked to stick to shallows. Course set up starts at 9:30 a.m.
<b>South Drive between Festival Drive and campground</b>	Cyclists will be training on the route between <b>11:30 a.m. and 1 p.m.</b> Please respect the athletes and proceed with caution.



## Canada Summer Games at Birds Hill Provincial Park - Week 1 Closure Schedule

<b>Sunday, July 30, 2017 – Triathlon Training Day</b>	
<b>East Beach parking lot #1</b>	<b>Closed July 26 to August 12</b>
<b>East Beach parking lot #2</b>	<b>6 a.m. – 10 a.m.</b> Northwest corner will be blocked.
<b>Lake</b>	<b>8 a.m. course set-up starts. Then from 10 to 11 a.m.,</b> swimmers will be training on the course in the deeper water. Patrons asked to stay in shallows.
<b>Path from East Beach to East Beach parking lot close to concessions</b>	<b>10 to 11:30 a.m.</b> Athletes will be training on course along trail close to concessions. Transition zone.
<b>South Drive between Festival Drive and campground</b>	<b>Closed 9 to 9:30 a.m.</b> Cyclists will be training on the route. Road re-opens at 9:30 a.m. Cyclists continue practice with traffic until 10 a.m. Please respect athletes and proceed with caution.



Campers: The section of South Drive from the campground to the East Beach parking lot will be closed to traffic between approximately 9 a.m. and 9:30 a.m. Please exit the campground heading west during that time frame. Please be advised that cyclists will be practicing along the route throughout the morning. Proceed with caution.

## Canada Summer Games at Birds Hill Provincial Park - Week 1 Closure Schedule

<b>Monday, July 31, 2017 Triathlon Competition Zone marked in Red</b>	
East Beach parking lot #1	Closed
East Beach parking lot #2	Closed until 2:30
Lake (Eastern 2/3)	East side closed until 12:30
Beach Front (East Side)	Restricted zone until 12:30
Lake View Trail (East Section)	Closed 6 a.m. to 1:30 p.m.
South Drive ( Festival Drive to campground entrance)	Closed 8:30 a.m. to 1 p.m.
East Beach Road	Closed 8:30 a.m. to 2:30 p.m.



Campground: Exiting campground right turn only between 8:30 a.m. and 1 p.m. Enter campground using South Drive coming from the West until 1 p.m.

Beach Goers: Use West Beach parking lot and west end of beach until 12:30 p.m.

If the event is cancelled due to weather on July 31, the alternate date is **Tuesday, August 1**. Same restrictions would apply.

## Canada Summer Games at Birds Hill Provincial Park - Week 1 Closure Schedule Triathlon – Relay

<b>Wednesday, August 2, 2017 – Triathlon Training Day (Relay)</b>	
East Beach parking lot #1	<b>Closed July 26 to August 12</b>
East Beach parking lot #2	<b>North-west corner will be blocked until 2:30 p.m.</b>
Path from East Beach to East Beach parking lot close to concessions.	<b>11 a.m. to 2 p.m.</b> Runners will be training on route. Please be aware.
Lake (Eastern 1/3)	<b>11:30 a.m. to 2 p.m.</b> Swimmers will be training on the course at the far east side of the beach. Patrons asked to keep their distance.



Cyclists will be practicing along eastern section of South Drive until 1:30 p.m. Please respect the athletes and proceed with caution.

Beach Goers: Use West Beach parking lot and west end of beach until 2:00 p.m.

## Canada Summer Games at Birds Hill Provincial Park - Week 1 Closure Schedule

Thursday, August 3, 2017 Triathlon Relay Competition	
East Beach parking lot #1	Closed
East Beach parking lot #2	Closed until 2:30 p.m.
Lake (Eastern 1/3)	East side closed until 12:30 p.m.
Beach Front (Eastern 1/3)	Restricted zone until 12:30 p.m.
Lake View Trail (East Section)	Closed 6 a.m. to 1:30 p.m.
South Drive ( Festival Drive to campground entrance)	Closed 8:30 a.m. to 1 p.m.
East Beach Road	Closed 6 a.m. to 2:30 p.m.
North Drive from Nimowin Rd. To Festival Drive - after Triathlon competition for set-up.	Closed 1 to 9 p.m.



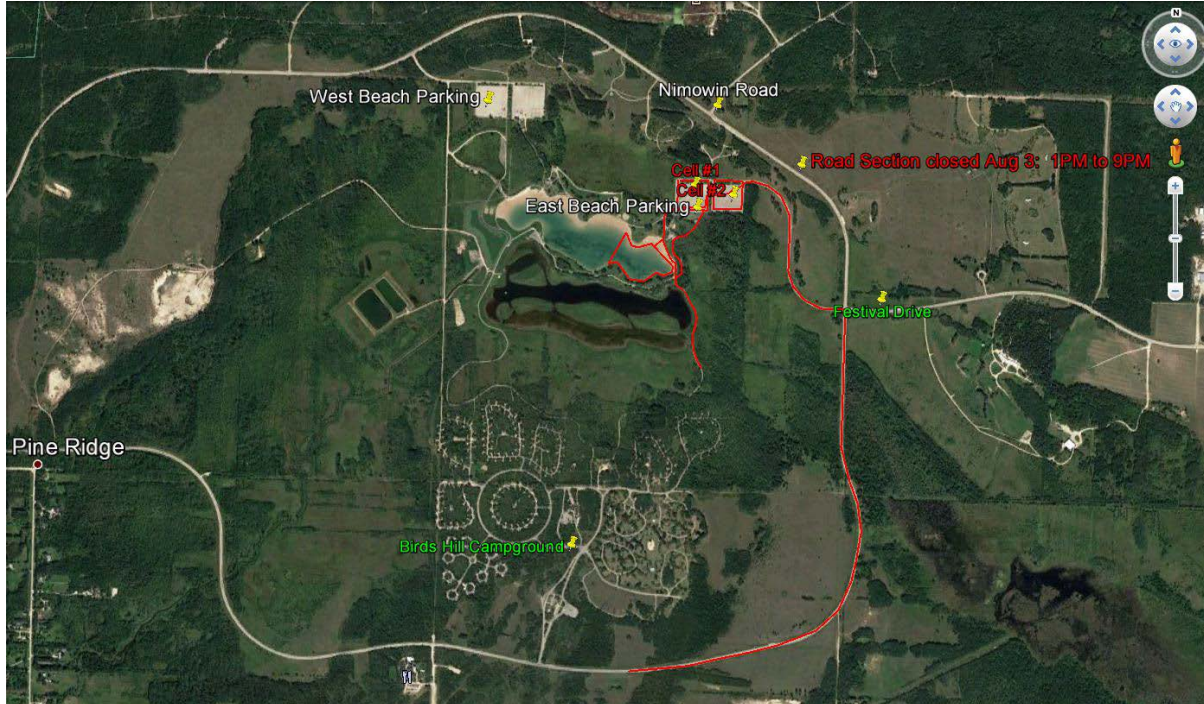
**Campground:** When exiting campground, right turn only between 8:30 a.m. and 1 p.m. Enter Campground using South Drive coming from the west until 1 p.m.

**Beach Goers:** Use West Beach parking lot and west end of beach until 2:30 p.m.

Please note the section of North Drive between Nimowin Road and Festival Drive will be closed from 1 to 9 p.m.

## Canada Summer Games at Birds Hill Provincial Park - Week 1 Closure Schedule

Friday, August 4, 2017 Triathlon Relay Competition	
East Beach parking lot #1	Closed
East Beach parking lot #2	Closed until 1 p.m.
Lake (Eastern 1/3)	East side closed until 11 a.m.
Beach Front (Eastern 1/3)	Restricted zone until 11 a.m.
Lake View Trail (East Section)	Closed 6 a.m. to 11:00 a.m.
South Drive ( Festival Drive to campground entrance)	Closed 8:30 a.m. to 10:30 a.m.
East Beach Road	Closed 6 a.m. to 1 p.m.



**Campground:** Exiting campground right turn only between 8:00 a.m. and 10:30a.m. Enter campground using South Drive coming from the west until 10:30 a.m.

**Beach Goers:** Use West Beach Parking lot and west end of beach until 1 p.m.